



Contents lists available at BioMedSciDirect Publications

## International Journal of Biological & Medical Research

Journal homepage: www.biomedscidirect.com



### Review article

## Clinical Perspective Of Lipoprotein – X

Dr. Suchitra Kumari, Dr. Tarun Kumar Panda

Asst. Professor, Dept. Of Biochemistry, All India Institute Of Medical Sciences, Bhubaneswar-19, Odisha  
Ophthalmic Surgeon, S.C.B. Medical College, Cuttack, Odisha

#### ARTICLE INFO

##### Keywords:

Cholestasis  
Lecithin Cholesterol acyl transferase (LCAT)  
Lipoprotein- X  
Pseudothyponatremia.

#### ABSTRACT

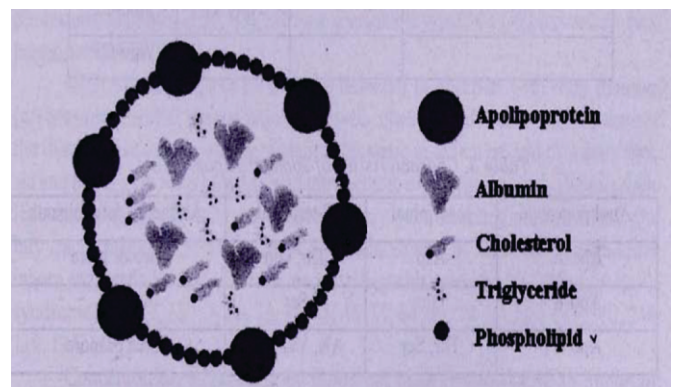
Lipoprotein – X (abnormal lipoprotein ) is rich in phospholipids and unesterified cholesterol. The main protein component is albumin within the core and apolipoprotein C upon the surface. It is cleared by the reticuloendothelial system and the kidneys. Earlier studies reported presence of lipoprotein X (LP-X) in patients with cholestasis. Bile lipoprotein is a precursor of LP-X and in cholestasis this refluxes into the plasma pool, binds to albumin to form LP-X. Cholestasis of pregnancy and Primary biliary cirrhosis patients also reported high LP-X levels. LP-X may not be atherogenic and it may have antioxidant LDL activity. LP-X is found in LCAT deficiency which is characterised by low High Density Lipoprotein (HDL), anaemia, corneal opacity and chronic kidney diseases. The presence of serum LP-X can be associated with severe hyperlipidaemia, pseudothyponatremia and it also interferes with some serum LDLc assays and complexes with Alkaline phosphatase.

© Copyright 2010 BioMedSciDirect Publications IJBMR -ISSN: 0976:6685. All rights reserved.

### 1. Introduction

In recent years abnormal lipoprotein, termed as lipoprotein X (LP-X) has attracted considerable interest both because of its role in the study of the fundamentals of lipoprotein metabolism [1] and their significance in clinical diagnosis [2]. By ultra centrifugal floatation, LP-X appears in the low density lipoprotein (LDL) fraction, however it differs strongly from normal low density lipoprotein (LDL) in its composition and properties. LP-X is a lamellar spherical particle with mean diameter 69 nm (range 40-100 nm) as revealed by electron microscope [3]. It is rich in phospholipids (60-67%) i.e. Lysophosphatidylcholine (4.1%), Sphingomyelin (14.2%), Phosphatidylcholine (77.5%), Phosphatidylethanolamine (2.5%) and cholesterol (23-30%) but poor in cholesterol ester (0.5-2%), triglycerides (2-3%) and protein (3-7%) [4,5]. Bile acids often present in LP-X is lithocholic acid. The protein component of lipoprotein X is dominated by albumin located in the core and apolipoprotein C (I, II, III) located on the surface of the particle [6,7]. Apolipoprotein C was discovered in 1964 by Gustafson and co-workers [8]. Apolipoprotein C has a domain containing an amphipathic helix. Hydrophobic amino acids are located at one side of the helix and hydrophilic amino acids at the other side. The hydrophobic part of the helix is thought to interact with the acyl chain of phospholipids whereas the hydrophilic part interacts with the phospholipid hydrophilic group (figure-1).

Figure-1. Structure of Lipoprotein X



Hydroxyapatite chromatography exhibited that LP-X has a higher molecular weight compared to LDL [9]. Proton magnetic resonance studies showed motion of acyl chains and cholesterol rings restricted in LP-X compared to its normal counterpart (LDL) [10]. Table -1 and Table-2 shows the molecular composition of different lipoproteins. Using zonal ultracentrifugation, LP-X can be divided into three isoforms i.e. LP-X1, LP-X2 and LP-X3 differing in density, phospholipid content and apolipoprotein composition [11]. Unlike low density lipoprotein, LP-X does not contain apolipoprotein B nor is it removed by LDL receptor but LP-X is cleared by the reticuloendothelial system and the kidneys.

\* Corresponding Author: DR SUCHITRA KUMARI, MBBS, MD

Asst. professor, Department Of Biochemistry  
All India Institute Of Medical Sciences (aiims)  
Sijua, Dumduma  
Bhubaneswar-751019, Khurda, odisha, india  
Tel: 9438884005 (mob)  
E Mail: Suchitrakumari76@gmail.com

©Copyright 2010 BioMedSciDirect Publications. All rights reserved.

**Table-1.Molecular composition of Lipoproteins**

Class	Protein (%)	Cholesterol (%)	Phospholipids (%)	Triacylglycerol (%)
HDL	33	30	29	8
LDL	25	50	21	4
LP-X	6	27	65	2
VLDL	10	22	18	50
CHYLOMICRON	<2	8	7	84

**Table-2. Apolipoproteins in different Lipoproteins**

VLDL	LDL	LP-X	HDL
Apo-B100	Apo-B100		Apo-A1
Apo-C1		Apo-C1	Apo-A2
Apo-C2		Apo-C2	Apo-C1
Apo-C3		Apo-C3	Apo-C2
Apo-E			Apo-C3
Apo-D		Apo-E	
		Apo-A1	

LP-X was detected for the first time in the blood sample of the patients with liver disease with obstructive jaundice[12]. Subsequent studies revealed that LP-X is detected in 45% of cases of liver disease with cholestasis, hypercholesterolemia and hyperlipoproteinemia[13].The failure of LP-X to exert feedback inhibition on cholesterol synthesis may contribute to the mechanism of hypercholesterolemia in obstructive jaundice. The presence of serum lipoprotein X does not distinguish between intrahepatic and extrahepatic cholestasis, however the concentration of LP-X in in patients with extrahepatic cholestasis were significantly higher than in those with intrahepatic cholestasis [14]. Bile lipoprotein is a precursor of LP-X and in cholestasis this refluxes into the plasma pool and binds with albumin to form LP-X.Further investigation demonstrated presence of LP-X in the blood of patients with primary biliary cirrhosis , cholangitis , hepatic cirrhosis and cholestasis of pregnancy [5,15,16]. In graft versus host disease of the liver after allogenic bone marrow transplantation, plasma LP-X is associated with severe hypercholesterolemia and xanthelasma. LP-X was also detected in the blood of patients with acute viral (96% of patients with hepatitis A , 82% of hepatitis B) and toxic hepatitis. It was shown that in acute case of Viral hepatitis , LP-X is the most specific test in determining the presence of cholestasis [17].LP-X levels were detected higher in children with progressive familial intrahepatic cholestasis and in infants with persistant cholestatic jaundice caused by biliary atresia and biliary agenesis of extra and intrahepatic origin [18,19].Considering the plasma LP-X level as an

important and informative marker of above mentioned liver and biliary diseases , its estimation has been widely used for clinical diagnosis of cholestasis and for monitoring the efficiency of relevant therapeutic measures [4,8, 19 20]. The study conducted by Stepien et al [21] confirms these earlier observations of raised serum LP-X in cholestasis but it is still debatable whether presence of LP-X in cholestasis increase cardiovascular risk. Perspective observation for a median of 7.4 years of 312 patients with primary biliary cirrhosis of various stages with highly increased cholesterol level , found no increased incidence of atherosclerotic death compared to age and sex matched controls [22].Based upon these results it was proposed that LP-X may be responsible for this phenomenon by preventing formation of oxidized LDL products and thus reducing LDL atherogenicity [23].In vitro study performed by Chang and Co workers[24] recently confirmed the above fact by revealing that after prolonged incubation with copper, LP-X containing LDL isolated from the blood of patients with primary biliary cirrhosis failed to increase the oxidation index or electrophoretic mobility noted in control LDL. These results suggest that LP-X reduces LDL atherogenicity by preventing LDL oxidation to protect endothelial cells integrity in hypercholesterolemia [24,25].They also suggested that altering LDL composition may be equally important as reducing LDL concentration in preventing or treating atherosclerosis.

Lecithin-cholesterol acyltransferase (LCAT, EC 2.3.1.43) is an enzyme which converts free cholesterol into cholesterol ester ( a more hydrophobic form of cholesterol ) which is sequestered into the core of a lipoprotein particle , making it a spherical structure. Familial LCAT deficiency is a monogenic autosomal recessive trait affecting cholesterol esterification , molecular basis being several allelic mutations of polymorphic gene on chromosome16 (16q 22.1) encoded LCAT [26,27,28]. This disease is characterized by diffuse corneal opacities ,target cell haemolytic anaemia (normocytic normochromic anaemia) , low concentration of high density lipoprotein(HDL) and renal dysfunction( proteinuria with renal failure) [29]. Familial LCAT deficiency is associated with low LDL and accumulation of LP-X in the plasma of patients [29,30,31]. The plasma concentration of LP-X in familial LCAT deficiency ranges from 43 mg/100 ml to 251mg/ 100 ml with a mean of 127 mg/ 100 ml. It is above the mean value of LP-X in patients with intrahepatic cholestasis (49 mg/ 100 ml) and below the mean level found in patients with extrahepatic cholestasis (341 mg / 100 ml) [32].The high level of LP-X cause glomerular capillary endothelial damage [33] and lead to progressive renal impairment followed by end stage renal failure [34].Lynn et al suggested that LP-X participates in the pathogenesis of glomerulosclerosis and subsequent renal failure in familial LCAT deficiency by stimulating monocyte infiltration via a mechanism involving the expression of MCP-1 (chemoattractant for monocytes) by mesangial cells [35], monocyte infiltration into the affected glomeruli being one of the key events in the pathogenesis of glomerulosclerosis in familial LCAT deficiency [36].Proteoglycans also plays an important role in regulating the uptake of LP-X into kidney mesangial cells and this mechanism is independant of the scavenger receptor [37].

Pseudohyponatremia has been reported in patients with severe hypercholesterolemia secondary to raised LP-X [38]. Siva kumar et al [39] described not only Pseudohyponatremia but also Pseudohypokalemia and Pseudohypochloridaemia in the presence of high concentration of LP-X. Assay bias has also been documented by various researchers for serum LDL cholesterol in the presence of LP-X. This should be considered while interpreting LDLc results in severely cholestatic serum samples [40,41]. Plasma concentration of LP-X was significantly correlated to the plasma activity of alkaline Phosphatase and serum bilirubin. Having strong aggregatory property, LP-X can bind to alkaline phosphatase (ALP) producing a LPX-ALP complex. This complex is detected in hepatic malignancy induced cholestatic patients.

Starch gel electrophoresis of serum samples from patients with biliary obstruction revealed stationary band of ALP which was thought to be due to ALP binding to LP-X [42]. LP-X can bind and remove free cholesterol from the circulation due to its strong aggregating ability [43]. Agarose gel electrophoresis, ultracentrifugation, nuclear magnetic resonance spectroscopy and immunological techniques [44,45,46] are some of the assay techniques available to measure serum LP-X. Some assays utilize differential precipitation of apo B containing lipoproteins and unesterified cholesterol is measured.

To summarize, different studies revealed raised serum LP-X in cholestasis but it is still debatable whether presence of LP-X in cholestasis increase cardiovascular risk. Further presence of LP-X in cholestasis does not distinguish between intrahepatic and extrahepatic causes. LP-X may be responsible for preventing formation of oxidized LDL products and thus reducing LDL atherogenicity. Raised LP-X levels in LCAT deficiency and after intra venous infusion of intra lipid solution had also been reported. Pseudohyponatremia, Pseudohypokalemia as well as Pseudohypochloridaemia were associated with severe hypercholesterolemia secondary to increased LP-X level. Assay bias for serum LDL cholesterol in the presence of LP-X, strong aggregating property of LP-X forming LPX-ALP complex are some of the important practical points to be consider while interpreting LDL cholesterol results in severely cholestatic serum sample.

## References

- [1] Alaupovic PD., Lee M., McConathy W J. On the identification and separation of lipoprotein families in major density classes of normal human plasma lipoproteins. *Circulation*, 1969, 40(Suppl. III), p.2.
- [2] Alegre B., Carrasco D., Breto M D. et al. Semi quantitative determination of lipoprotein X (LP-X). Its usefulness in differential diagnosis of jaundice. *Rev.Clin. Esp.*, 1976, 143(1), p.79-81
- [3] Hamilton RL, Havel RJ, Kane JP. Cholestasis. Lamellar structure of the abnormal human serum lipoprotein. *Science*, 1971, 172 (982), p475-478.
- [4] Felker T.E, Hamilton RL, Havel RJ. Secretion of Lipoprotein X by perfused livers of rats with cholestasis. *Proct. Natl. Acad. Sci. USA*, 1978, 175 (7), p. 3459-3463.
- [5] Jahn C E, Schaefer EJ, Taam LA. et al. Lipoprotein abnormalities in primary biliary cirrhosis, association with hepatic lipase inhibition as well as altered cholesterol esterification. *Gastroenterology*, 1985; 89, p1266-1278.
- [6] Hickman PE, Dwyer K P, Masarei JR. Pseudohyponatremia, hypercholesterolaemia and primary biliary cirrhosis. *J. Clin. Pathol.* 1989, 42 (2), p 167-171.
- [7] Patsch J. R, Aune K C, Gotto AM Jr, Morrisett J D. Isolation chemical characterization and biophysical properties of three different abnormal lipoproteins. LPX1, LPX2 and LPX3. *J Biol Chem.*, 1977; 252, p 2113-2120.
- [8] Gustafson A., Alaupovic P, Furman RH. Studies of the composition and structure of serum lipoprotein. Physical chemical characterization of phospholipid - protein residues obtained from very low density human serum lipoproteins. *Biochem. Biophys. Acta*, 1964, 84, p767-769.
- [9] Tam S.P, Breckenridge W.C. Apo lipoprotein and lipid distribution between vesicles and HDL like particles formed during lipolysis of human very low density lipoprotein by perfused rat heart. *J. Lipid. Res*, 1983, 24(10), p 1343-1357.
- [10] Brainard J.R., Cordes E.H., Gotto A.M. Jr et al. Lipoprotein X proton and phosphorus -31 nuclear magnetic resonance studies on native, reconstituted and model systems. *Biochemistry*: 1980. 19(18), p 4273-4279.
- [11] Protter AA, Levy- Wilson B, Miller J et al. Isolation and sequence analysis of the human apolipoprotein C-III gene and the intergenic region between Apo A-I and apo C-III gene. *DNA*, 1984, 3, p449-456.
- [12] Russ EM, Raymunt J, Barr DP. Lipoprotein in primary biliary cirrhosis. *J. Clin. Invest.* 1956, 35, p133-144.
- [13] Ross A, Murphy GM, Wilkinson PA et al. Occurrence of an abnormal lipoprotein in patients with liver disease. *Gut*, 1970, 11 (12) 1035-1037.
- [14] Calvo C, Arroqui I. Quantitative determination of lipoprotein X in extrahepatic cholestasis and intrahepatic cholestasis. *Med. Chil*, 1984, 112(3), p233-237.
- [15] Johnson P, Olegard R, Samsioe G et al. Studies in cholestasis of pregnancy. Fatty acid composition of serum phosphoglycerides. *Acta. Obstet. Gynecol. Scand*, 1975(a), 54(3), p 241-246.
- [16] Kaplan M M. Primary biliary Cirrhosis. *N Eng J Med*, 2005, 335 (12) p 1261-1273.
- [17] Magnani H N., Alaupovic P. Utilization of the quantitative assay of lipoprotein X in the differential diagnosis of extrahepatic obstructive jaundice and intrahepatic disease. *Gastroenterology*, 1976, 71 (1), p 87-93.
- [18] Davit-Spraul A, Pourci M L, Atger V et al. Abnormal lipoprotein pattern in patients with Alagille syndrome depends on icterus severity. *Gastroenterology*, 1996, 111(4), p 1023-1032.
- [19] Deutsch J, Kurz R, Muller WD, Beker H. Quantitative determination of LP-X in the differential diagnosis and treatment of direct hyperbilirubinaemia in infancy. 1978, 42 (4), p 230-234.
- [20] Koga S, Yamamoto K, Ibayashi H. Clinical significance of quantitative determination of lipoprotein X in patients with cholestasis. *Nippon Shokakibyō Gakkai Zasshi*, 1979, 76 (2), p 231-238.
- [21] Stepien KM, Divyateja H, Ahmed F, Prinsloo P, Gupta P. Lipoprotein X in a patient with cholestasis and hypertriglyceridaemia. *Ann Clin Biochem*, 2013. In press.
- [22] Crippin J S., Lindor K D, Jorjensen R et al. Hypercholesterolaemia and atherosclerosis in primary biliary cirrhosis. What is the risk? *Hepatology*, 1992; 15, p 858-862.
- [23] Steinberg D., Witztum J L. Is the oxidative modification hypothesis relevant to human atherosclerosis? Do the antioxidant trials conducted to date refute the hypothesis? *Circulation*, 2002, 105, v 2107-2111.
- [24] Chang P Y, Lu S C, Su T C et al. Lipoprotein X reduces LDL atherogenicity in primary biliary cirrhosis by preventing LDL oxidation. *J. Lipid. Res*, 2004, 45, p 2116-2122.
- [25] Sorokin A, Brown J L., Thompson P D. Primary biliary cirrhosis, Hyperlipidaemia and atherosclerotic risk. A systematic review. *Atherosclerosis* 2007, 194(2), p 293-299.
- [26] Azoulay M, Henrey I, Tata F et al. Structural gene for Lecithin Cholesterol Acyl Transferase (LCAT) map to 16 q22. *Ann Hum. Genet*, 1987, 51 (pt.2), p 129-136.
- [27] Funke H, Von Ehardstein A, Pritchard P H et al. Genetic and phenotypic heterogeneity in familial LCAT deficiency. Six newly identified defective alleles further contribute to the structural heterogeneity in this disease. *J. Clin. Invest.*, 1993, 91 (2), p 677-683.
- [28] Gotoda T, Yamada N, Murase T et al. Differential phenotypic expression by three mutant alleles in Familial LCAT deficiency. *Lancet*, 1991, 338 (8770), p 778-781.

- [29] Kuivenhoven J A, Pritchard H, Hill J et al. Molecular pathology of lecithin cholesterol acyl transferase deficiency syndrome. *J. Lipid. Res.*, 1997, 38 (2), p191-205.
- [30] Guerin M, Dolphin P J, Chapman MJ. Familal lecithin cholesterol acyl transferase deficiency : further resolution of lipoprotein particle heterogeneity in the low dwnsity interval. *Atherosclerosis* , 1993 ,104 (1-2), p195-212.
- [31] Ritland S , Stokke K T , Gjone E. Changes in the concentration of lipoprotein X during incubation of postheparin plasma from patients with familial lecithin cholesterol acyl transferase(LCAT). Deficiency. *Clin Chem Acta*, 1976, 67 (1), p63-69.
- [32] Reitland S, Gjone E . Quantitative studies of Lipoprotein X in Familial lecithin cholesterol acyl transferase deficiency and during clolesterol esterification. *Clin Chem Acta*, 1975, 59 (2) ,p 109-119.
- [33] Sessa A , Battini G , Meroni M et al. Hypocomplementemic Type - II membranoproliferative glomerulonephritis in a male patient with Familial lecithin cholesterol acyl transferase deficiency due to two different allelic mutations. *Nephron*, 2001, 88 (3), p 268-272.
- [34] Zhu X , Herzenberg AM , Eskanderian M et al. A novel in vivo Familal lecithin cholesterol acyl transferase deficient mouse expressing predominantly LPX is associated with spontaneous glomerulopathy. *Am. J. Pathol.* 2004, 165(4), p 1269-1278.
- [35] Lynn E G , Siow YL , Frohlich J . et al. Lipoprotein X stimulates monocyte chemoattractant protein -1 expression in mesangial cells via Nuclear factor -kappa B. *Kidney Int*, 2001, 60(2), p520-532.
- [36] El Nahas A M. Glomerulosclerosis, insights into pathogenesis and treatment. *Nephrol. Dial. Transplant*, 1989, 4, p,843-853.
- [37] Lynn EG, Choy PC, Magil AOK. Uptake and metabolism of lipoprotein-X in mesangial cells. *Mol Cell Biochem* 1997;175:187-94
- [38] Vo H, Gosmanov AR, Garcia-Rosell M, Wall BM. Pseudohyponatremia in acute liver disease. *Am J Med Sci* 2013;345:62-4.
- [39] Sivakumar T, Chaidarun S, Lee H, Cervinski M, Comi R. Multiple lipoprotein and electrolyte laboratory artifacts caused by lipoprotein X in obstructive biliary cholestasis secondary to pancreatic cancer. *J Clin Lipidol* 2011;5:324-8.
- [40] Herzum I, Giehl C, Soufi M, Junclas H, Wahl HG. Interference in a homogeneous assay for low-density lipoprotein cholesterol by lipoprotein X. *Clin Chem Lab Med* 2007;45:667-71.
- [41] Fei H, Maeda S, Kirii H, et al. Evaluation of two different homogeneous assays for LDL-cholesterol in lipoprotein-X-positive serum. *Clin Chem* 2000;46:1351-6.
- [42] Brocklehurst D, Lathe GH, Aparicio SR. Serum alkaline phosphatase, nucleotide pyrophosphatase, 50-nucleotide and lipoprotein-X in cholestasis. *Clin Chim Acta* 1976;67:269-79.
- [43] Wolf PL. Clinical significance of serum high-molecular-mass alkaline phosphatase, alkaline phosphatase-lipoprotein-X complex, and intestinal variant alkaline phosphatase. *J Clin Lab Anal* 1994;8:172-6.
- [44] Bos ES, van der Doelen AA, Denissen AE, Goverde BC, Magnani HN, Kostner GM. A novel assay for the quantitative determination of lipoprotein-X (LP-X) in serum. *Clin Chim Acta* 1983;127:383-90.
- [45] Hashiguchi Y, Kawaguchi M, Nakanishi M, et al. Simple, direct measurement of lipoprotein X in serum. *Clin Chem* 1982;28:606-8.
- [46] Talafant E, Tovarek J. Enzymatic determination of lipoprotein-X, a specific serum cholestasis marker. *J Clin Chem Clin Biochem* 1981;19:155-7.